

A new Winter Session Course in Regional Planning offered by
Nedim Kemer
www.people.umass.edu/nedkem



Visualizing Plans, LANDARCH 597 P *Visual Narrative and Interpretation of Plans*

Reviewing physical site plans is one of the most common tasks of municipal planners. Therefore, to develop an ability to interpret the plan graphics and to visualize the built outcome of site plans is critical for practicing planners. Similarly, planning professionals are often called on to write or revise municipal regulations, such as setbacks, road widths and curbing, and design guidelines. Interpreting and evaluating a physical plan, envisioning a bylaw and what it means for built projects is an essential skill. The link between conceptualization and built outcomes can often be ambiguous due to ineffectual representation of design ideas and plan policies. Such ambiguity can lead to serious misinterpretations of the plan's intentions and bypassing the bylaws. Having a certain level of graphical narration skill either with a pencil as the simplest medium or with an advanced computer application to create sketches and to provide graphical clarity becomes essential to enable professionals to confront these challenges. The course will address such skills in 2 weeks with a 3 credit reward.

Visualizing Plans: Visual Narrative and Interpretation of Plans - 11/27/2008



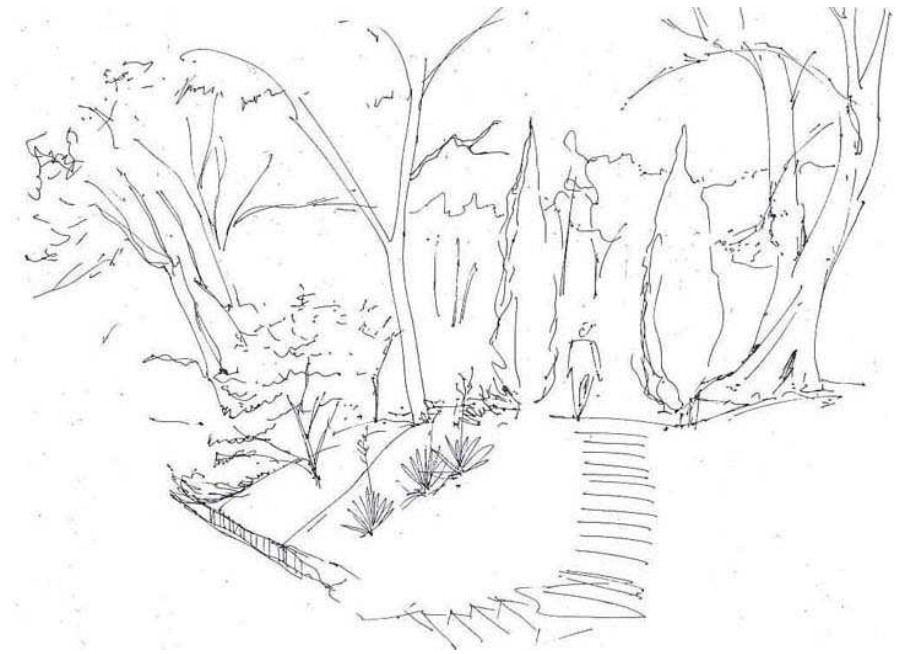
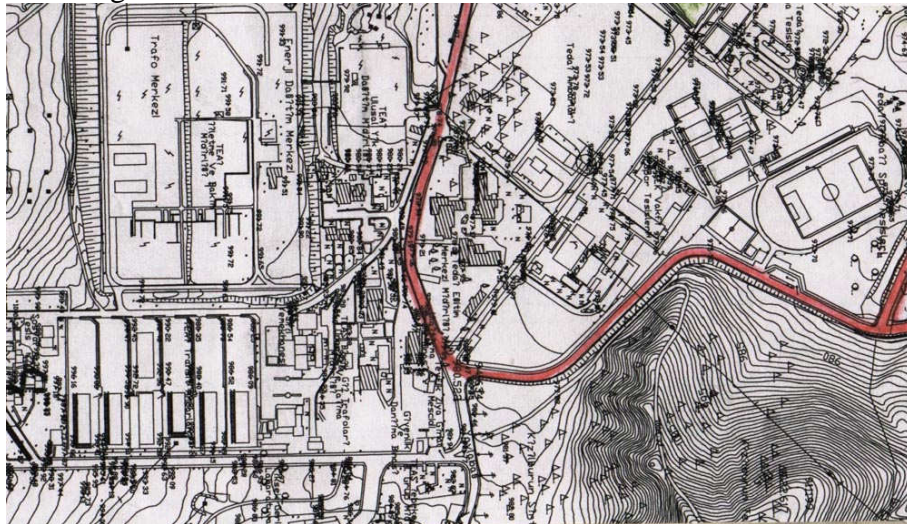
Objective: The aim of the course is to develop comprehension of the tangible dimensions of physical plans and regulation manuscripts. The students will be introduced to basic graphic communication tools and skills both to understand and to render. The majority of the course activities will go back and forth between the planning and building processes: from design to execution and vice versa.

To accomplish these learning objectives, the course will involve:

- Introduction to the basics of plan graphics: line, texture, color, pattern, scale, orientation.
 - Hand Graphics
 - Computer Graphics.
- Reading, analyzing and interpreting site plans
 - Visiting built projects in situ and seeing how the site plans look on the ground.
 - Preparation of a simplified site sketch plan for a project.
- Reading and interpreting zoning codes and design guidelines
 - Visiting a variety of neighborhoods (commercial, industrial, residential) and seeing how the underlying zoning and design guidelines look as built.
 - Preparation of simplified site sketches to demonstrate zoning code outcomes

Method: The course will introduce students to basic drawing practices and common computer applications. They will be instructed to sketch what they envision and conceptualize, consequently what they see and perceive. Basic drawing techniques utilizing classical medium such as pen and pencil will be used to foster personal skills in conveying an experience in an actual landscape or depicting concepts from the virtual realm of mind. Personal experience as the human input is essential hence the camera will only be allowed within strict limitations merely to confront technical difficulties and to take advantage of time and space related challenges. Collage as a supplementary method will be introduced in order to overcome talent related challenges. Class will generally meet in a design studio setting however occasional meetings at the computer room and some field trips will also occur.

The course assumes no prior skill in design drawing or particular software expertise. Those with relevant software knowledge may use computer skills for sketches; those without may use pencil to sketch. However a combination of both is the ideal target.



Course Material:

In addition to the basic rendering media, which students will need to provide prior to the classes, the course will utilize several printed materials which are listed below. The instructor will place them on reserve for the class use.

Porterfield, Gerald A., Kenneth B. Hall Jr., 1995, *A concise guide to community planning* McGraw-Hill, New York (HT 167. P67)

Sendich, Emina (ed), 2006, *Planning and Urban Design Standards*, American Planning Association, John Wiley & Sons Hoboken, New Jersey, (TH 2032. P55)

Tufte, Edward R., 1990, *Envisioning Information*, Cheshire, Connecticut, (P93.5 .T84)